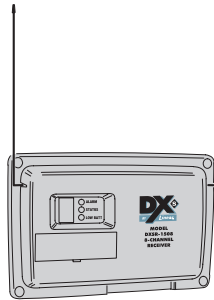


DXSR-1504/EC DXSR-1508/EC

SUPERVISED DIGITAL RECEIVERS

Installation Instructions



Linear[®]

(760) 438-7000 • FAX (760) 438-7043
www.linearcorp.com

PRODUCT DESCRIPTION

The DXSR-1504/EC and DXSR-1508/EC are four and eight channel supervised digital receivers with solid state outputs designed for use with Linear's DX and DXS Format /EC transmitters. These receivers can be used in a variety of security and remote control applications. When the receiver detects a signal from a transmitter programmed into its memory, the appropriate channel output activates. The channel outputs have three optional configurations; 3/4 second momentary, toggle on/off, and latch until restored. Status and low battery outputs are for supervisory indications. Cutting jumpers select which channels require supervisory status reports from transmitters.

Each unit incorporates a high-sensitivity superheterodyne diversity receiver with two whip antennas. This type of receiver provides superior performance by preventing loss of signal due to multi-path interference.

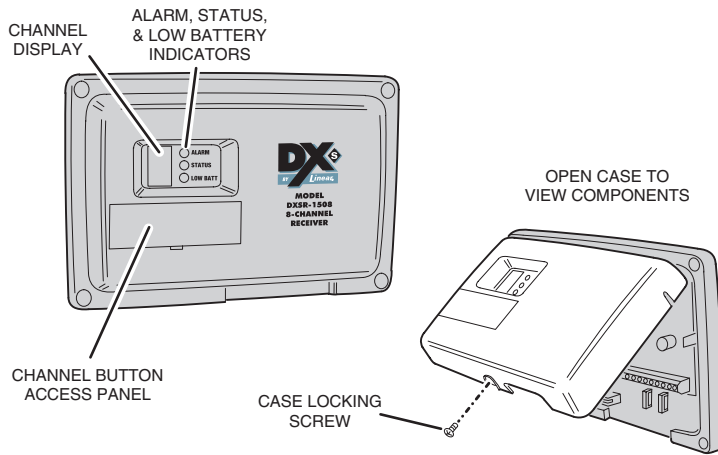
In a typical installation, the receiver is connected to an alarm control panel, door strike, camera, high current relay or some other devices. Transmitters are used to activate or control the devices. The receiver should be mounted indoors or inside a weather resistant *non-metallic* housing for outdoor use.

The digital DX/DXS code format features over a million possible codes. The transmitters are precoded at the factory to unique codes, so no field coding is required. For versatility, *any transmitter can be programmed into any receiver channel*. Receivers must be programmed to recognize the transmitter's code before system testing and operation. Up to 32 transmitters can be programmed into the receiver. Each button on multi-button portable transmitters send a unique code, and are programmed as separate transmitters.

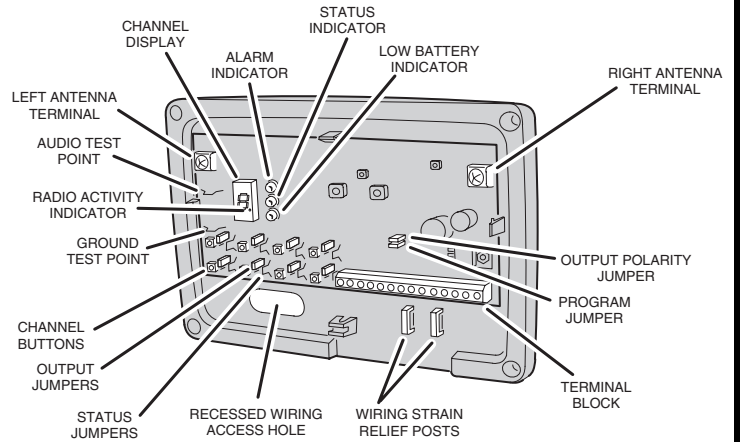
The CHANNEL display shows the channels activated and the presence of radio activity. Individual indicators for ALARM, STATUS, and LOW BATT show the supervisory status of each receiver channel. All outputs can be configured for normally open or normally closed.

The units can be powered from a 10.2-14.4 VDC or 12-16 VAC power source. The units will draw about 35 mA standby and up to 120 mA in alarm.

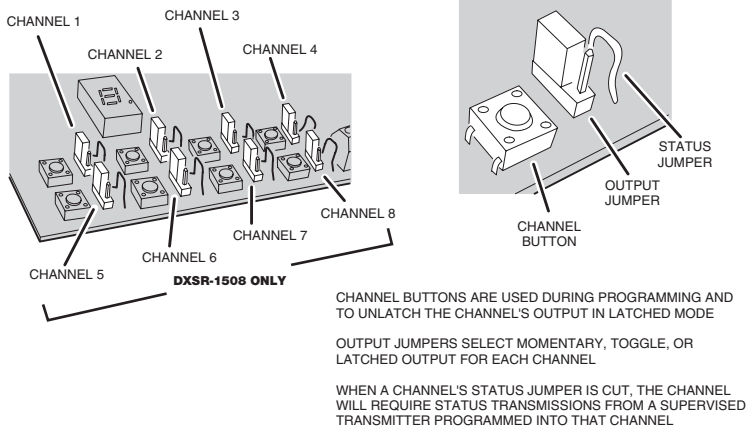
FEATURES



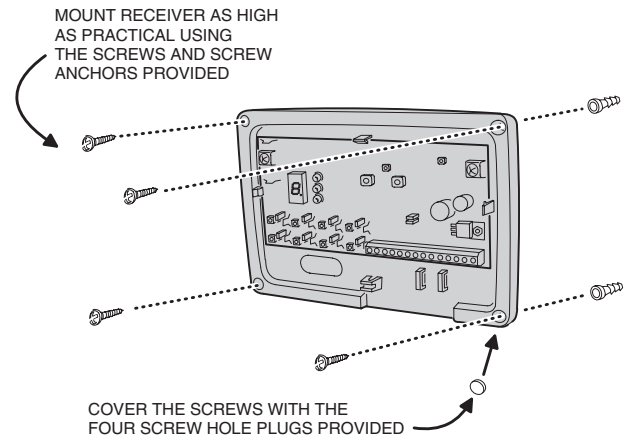
COMPONENT LOCATIONS



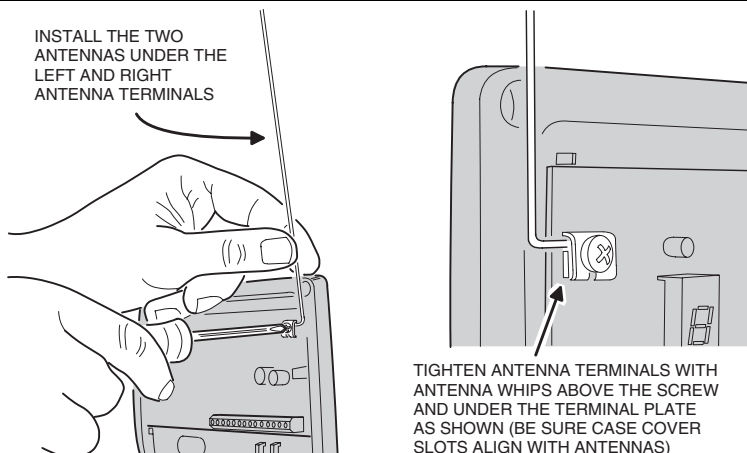
OPTION JUMPERS AND CHANNEL BUTTONS DETAIL



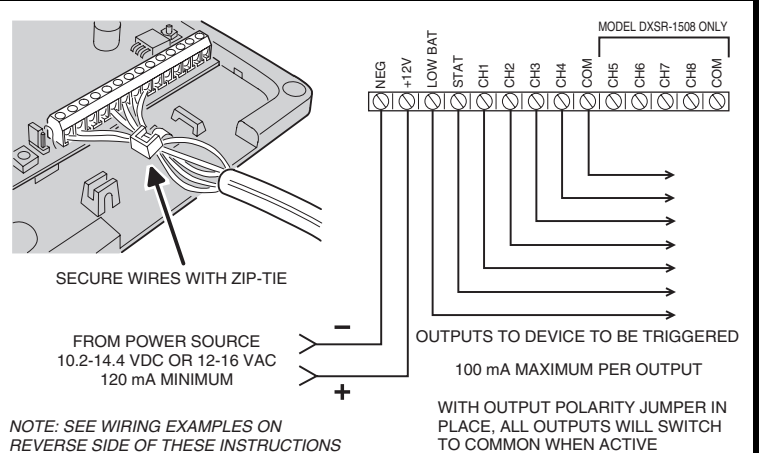
MOUNT RECEIVER



ATTACH ANTENNAS

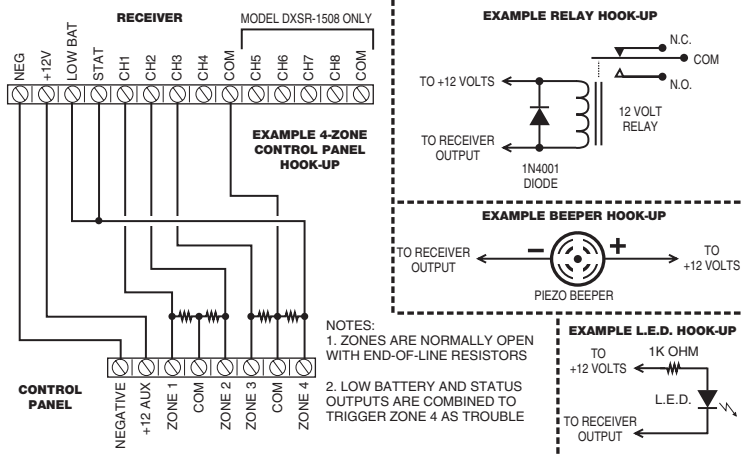


CONNECT TERMINALS

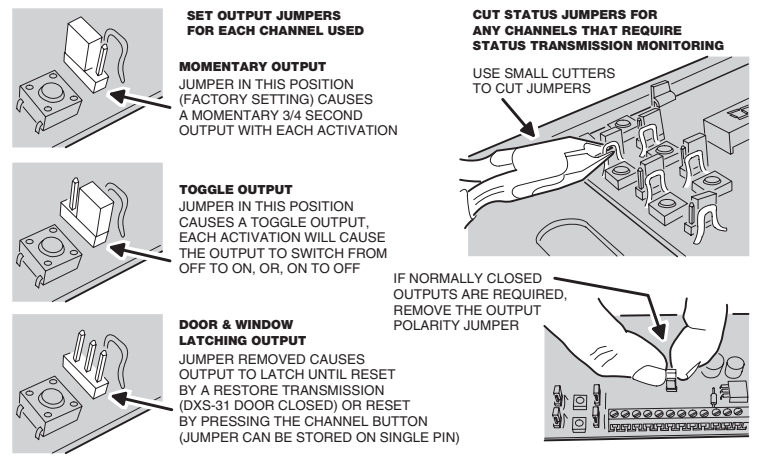


NOTE: SEE WIRING EXAMPLES ON REVERSE SIDE OF THESE INSTRUCTIONS

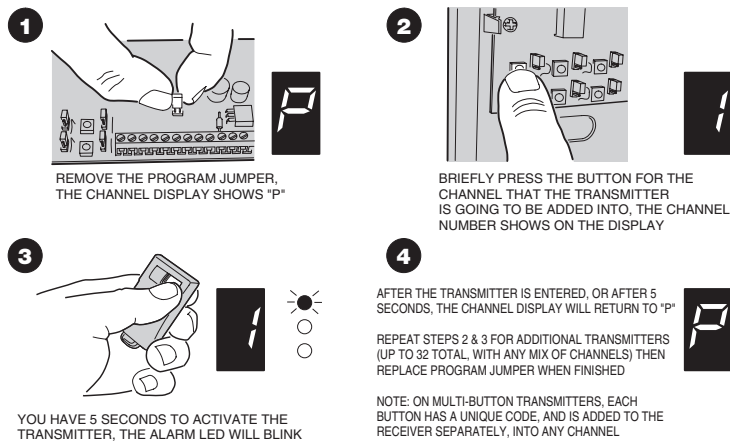
WIRING EXAMPLES



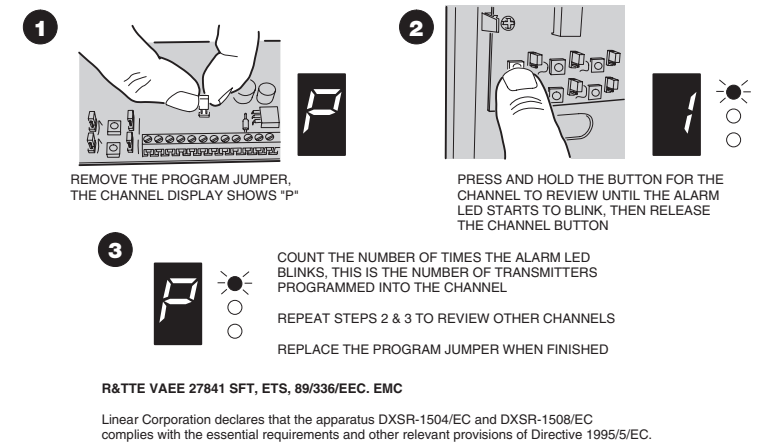
SELECT OPTIONS



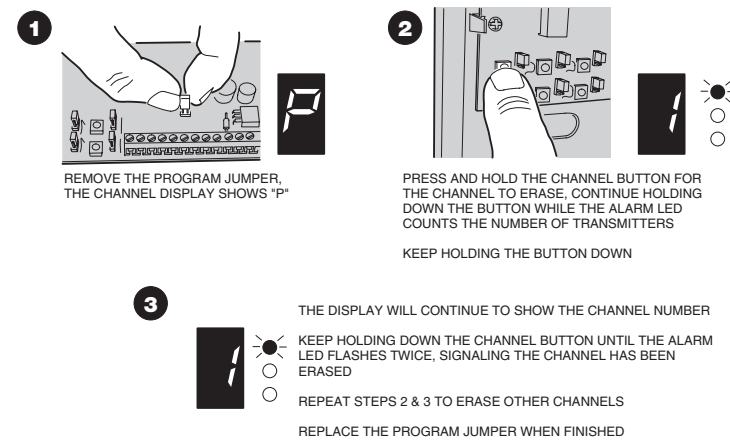
ADDING TRANSMITTERS



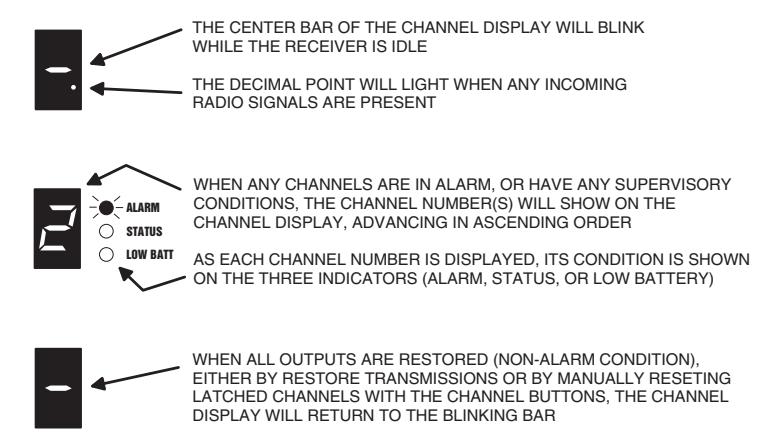
REVIEWING MEMORY



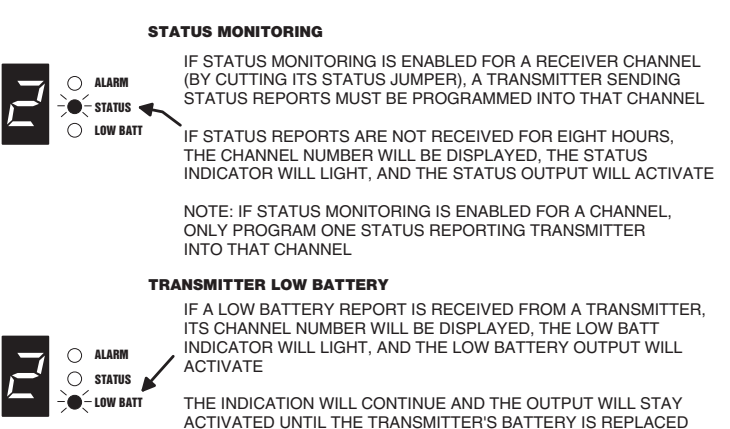
REMOVING TRANSMITTERS



SYSTEM OPERATION



SUPERVISORY CONDITIONS



INTERNATIONAL WARRANTY

This Linear product is warranted against defects in material and workmanship for twelve (12) months. The Warranty Expiration Date is labeled on the product. **This warranty extends only to wholesale customers** who buy direct from Linear or through Linear's normal distribution channels. **Linear does not warrant this product to consumers.** Consumers should inquire from their selling dealer as to the nature of the dealer's warranty, if any. **There are no obligations or liabilities on the part of Linear Corporation for consequential damages arising out of or in connection with use or performance of this product or other indirect damages with respect to loss of property, revenue, or profit, or cost of removal, installation, or reinstallation.** All implied warranties, including implied warranties for merchantability and implied warranties for fitness, are valid only until Warranty Expiration Date as labeled on the product. **This Linear Corporation Warranty is in lieu of all other warranties express or implied.**

For warranty service on Linear equipment return product, at sender's expense to:

Linear Hong Kong
19/F Hounor Industrial Centre
6 Sun Yip Street
Chai Wan, Hong Kong
Attention: Repairs Department

REPAIRS POLICY

- * Charges will be made for equipment that is not in warranty, shows customer abuse, or is damaged by the effects of lightning, water, fire, or other abnormal happenings.
- * Customer's equipment sent in for repair may be repaired or replaced with new or remanufactured equipment at Linear's discretion.

* The customer is always responsible for shipping and handling charges to the repairs facility. Linear will pay return shipping and handling charges on "in warranty" products shipped back to the customer. The customer will be billed for the return shipping and handling charges on "out of warranty" products.

* There will be a 50% expedite fee for any express requests.

* The International Sales Manager must be notified prior to the return of product to Linear. All international returns must have an International Repair Authorization number (IRA#). The number must be marked on all packages. Failure to do so will cause delays in processing.

IMPORTANT !!!

Linear radio controls provide a reliable communications link and fill an important need in portable wireless signaling. However, there are some limitations which must be observed.

- * The radios are required to comply with local rules and regulations as radio devices. As such, they have limited transmitter power and therefore limited range.
- * A receiver cannot respond to more than one transmitted signal at a time and may be blocked by radio signals that occur on or near their operating frequencies, regardless of code settings.
- * Changes or modifications to the device may void regulatory compliance.
- * Infrequently used radio links should be tested regularly to protect against undetected interference or fault.
- * A general knowledge of radio and its vagaries should be gained prior to acting as a wholesale distributor or dealer, and these facts should be communicated to the ultimate users.